

Ulcerative Colitis Endoscopic Index of Severity – UCEIS

The UCEIS was developed with the aim to find a more detailed and validated index based on endoscopy findings only. Previous scoring systems either lacked level of detail, or included assessment of symptom severity, affecting the overall result.

Descriptor (Score most severe lesions)	Likert Scale anchor points	Definition
Vascular pattern	Normal (0)	Normal vascular pattern with arborisation of capillaries clearly defined, or with blurring or patchy loss of capillary margins
	Patchy obliteration (1)	Patchy obliteration of vascular pattern
	Obliterated (2)	Complete obliteration of vascular pattern
Bleeding	None (0)	No visible blood
	Mucosal (1)	Some spots or streaks of coagulated blood on the surface of the mucosa ahead of the scope, which can be washed away
	Luminal mild (2)	Some free liquid blood in the lumen
	Luminal moderate or severe (3)	Frank blood in the lumen ahead of endoscope or visible oozing from mucosa after washing intra-luminal blood, or visible oozing from a haemorrhagic mucosa
Erosions & Ulcers	None (0)	Normal mucosa, no visible erosions or ulcers
	Erosions (1)	Tiny (<5mm) defects in the mucosa, of a white or yellow colour with a flat edge
	Superficial ulcer (2)	Larger (>5mm) defects in the mucosa, which are discrete fibrin-covered ulcers when compared to erosions, but remain superficial
	Deep ulcer (3)	Deeper excavated defects in the mucosa, with a slightly raised edge

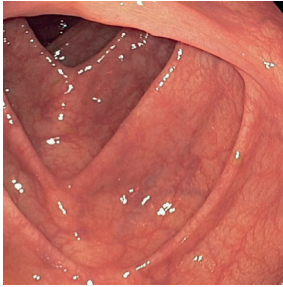


Fig 39. Ulcerative colitis, UCEIS 0 (normal)

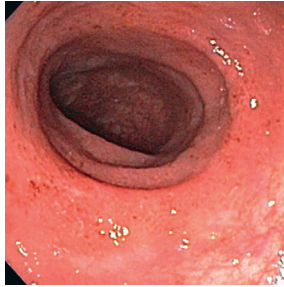


Fig 40. Ulcerative colitis, UCEIS 1



Fig 41. Ulcerative colitis, UCEIS 2

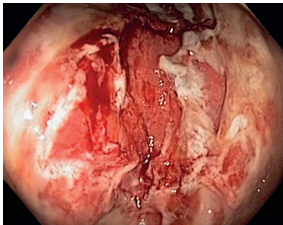


Fig 42. Ulcerative colitis, UCEIS 3

Reference: Travis SP et al. Reliability and initial validation of the Ulcerative Colitis Endoscopic Index of Severity. *Gastroenterology* 2013; 145: 987-995

Photos supplied by:
MD Anders Neumann, Viborg Regional hospital, Denmark: fig 39
David Musher/Science Source fig 40
TT Nyhetsbyrån AB: fig 41, 42