

Simple Endoscopic Score for Crohn's Disease – SES-CD

A simplified index, the simple endoscopic score to assess endoscopic severity of Crohn's disease (SES-CD) has also been developed and correlates well with the CDEIS. It also correlates well to clinical parameters and serum C-reactive protein levels. With SES-CD it is easier and faster to score and the reproducibility is high. The final score is the sum of four variables – 1.4 x (number of affected segments) and ranges from 0 to 60 points.

In SES-CD four endoscopic variables are scored 0–3.

The variables are scored in each of the five examined bowel segments and the total sum is calculated.

Variables Simple Endoscopic Score for Crohn's Disease

Variable	SES-CD Score			
	0	1	2	3
Size of ulcers (diameter cm)	None	Aphthous (0.1–0.5)	Large (0.5–2.0)	Very large (> 2.0)
Ulcerated surface	None	< 10%	10–30%	> 30%
Affected surface	None	< 50%	50–75%	> 75%
Narrowings	None	Single, can be passed	Multiple, can be passed	Cannot be passed

Number of affected segments: If at least one variable is 1 or above – the segment is affected

	Ileum	Right colon	Transverse colon	Left colon	Rectum	Sum
Size of ulcers (0–3*)						
Ulcerated surface (0–3*)						
Affected surface (0–3*)						
Presence of narrowings (0–3*)						
SES-CD						

Remission = SES-CD: 0–2

In some publications the total score is reduced 1.4 times the number of affected segments. That is often obliterated in clinical practice and also not used in available calculators (discussed in the reference by Daperno et al).



Fig 27. Crohn's disease,
Mild endoscopic activity



Fig 28. Crohn's disease,
Moderate endoscopic activity

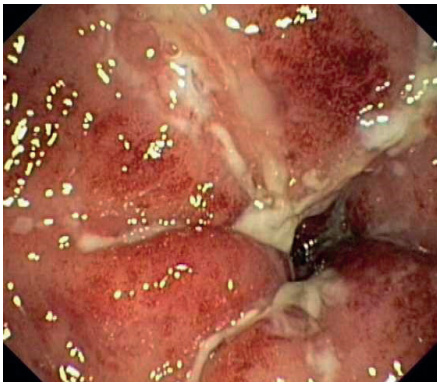


Fig 29a. Crohn's disease,
Severe endoscopic activity

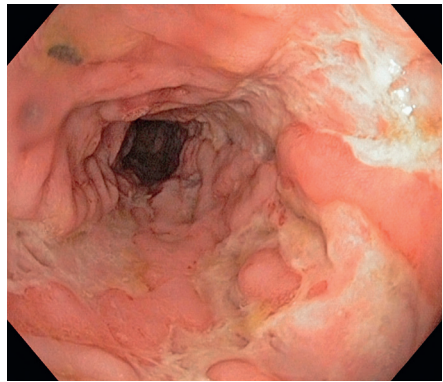


Fig 29b. Crohn's disease,
Severe endoscopic activity

Reference: Daperno M, D'Haens G, Van Assche G et al. Development and validation of a new, simplified endoscopic activity score for Crohn's disease: the SES-CD. *Gastrointest. Endosc.* 60,505-512 (2004).

Photos supplied by:
TT Nyhetsbyrån AB: fig 27, 28, 29a, 29b