

Evaluation of post operative recurrence – Rutgeert’s score

Rutgeert’s score is the gold standard for endoscopic post-surgical recurrence evaluation. The score is a useful tool since the cumulative rate of symptomatic recurrence is significant and it has been shown that the severity of the endoscopic recurrence is predictive of the subsequent clinical course. When investigated, the anastomosis region should be excluded when grading the endoscopic finding.

Grade	Endoscopic findings
0	No lesions in the distal ileum
1	≤ 5 aphthous lesions
2	> 5 aphthous lesions with normal mucosa between the lesions, or skip areas of larger lesions or lesions confined to ileocolonic anastomosis
3	Diffuse aphthous ileitis with diffusely inflamed mucosa
4	Diffuse inflammation with already larger ulcers, nodules, and/or strictures

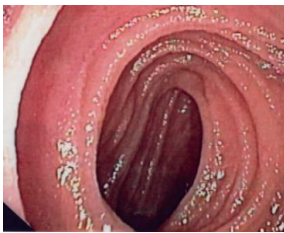


Fig 30. Crohn’s disease, Grade 0 no lesions



Fig 31. Crohn’s disease, Rutgeerts’ score grade 1 < 5 aphthous lesions



Fig 32. Crohn’s disease, Rutgeerts’ score grade 2 > 5 aphthous lesions



Fig 33. Crohn’s disease, Rutgeerts’ score grade 3 – Diffuse aphthous ileitis



Fig 34. Crohn’s disease, Rutgeerts’ score grade 4 – Diffuse inflammation with large ulcers mm

Reference: Rutgeerts P, Geboes K, Vantrappen G, et al. Predictability of the postoperative course of Crohn’s disease. *Gastroenterology*. 1990;99:956–63.

Photos supplied by:

Prof. Jørgen Jahnsen, Akershus University hospital, Norway: fig 30, 31, 32, 33, 34